

**Mele Ko‘ihonua
(Creation Chant)
“Ka Hānau ‘Ana O Ka Papakū Honua”
(The Birthing of the Soils)**

Adapted from Ka Hānau ‘Ana O Nā Malama
by Kristy Lam with guidance from Kekuhi Keali‘ikanaka‘ole & Manaiakalani Kalua

‘O kēia ka hānau ‘ana o ka papakū honua!
This is the birthing of the surface of the Earth!

1ST GENERATION

‘O **Haumea** ka wahine, ‘o **Kanaloaakua** ke kāne
Haumea the wife, Kanaloaakua the husband

2ND GENERATION

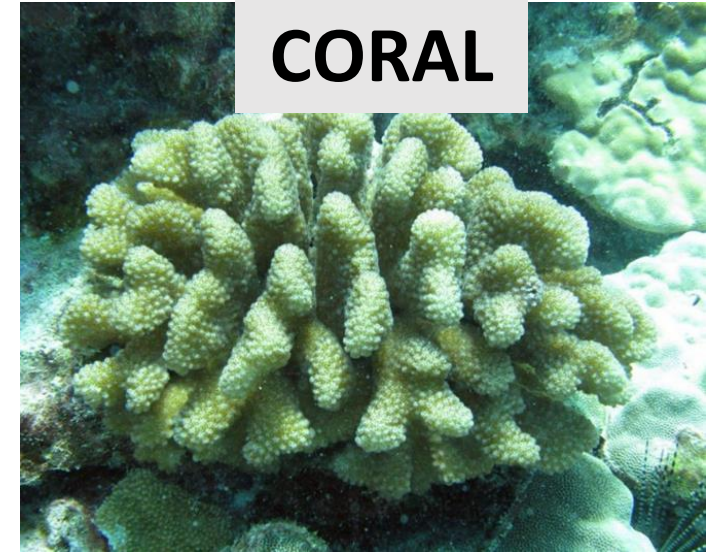
Hānau mai kā lāua ‘o **Ka‘alā** he keiki
They give birth to basalt rock



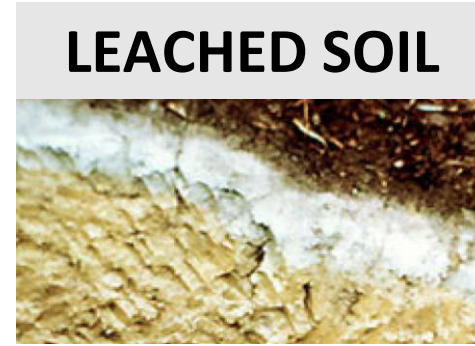
Hānau mai kā lāua ‘o **Kalehu** he keiki
They give birth to volcanic ash



Hānau mai kā lāua ‘o **Keko‘a** he keiki
They give birth to coral

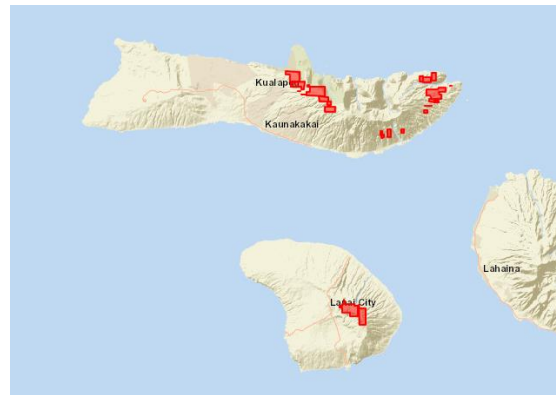


‘O **Ka‘alā** ka makua, ‘o ‘**Alaea** ka makua, ‘o **He‘eaholo** ka makua
The parents Basalt, Clay, and Leached Soil

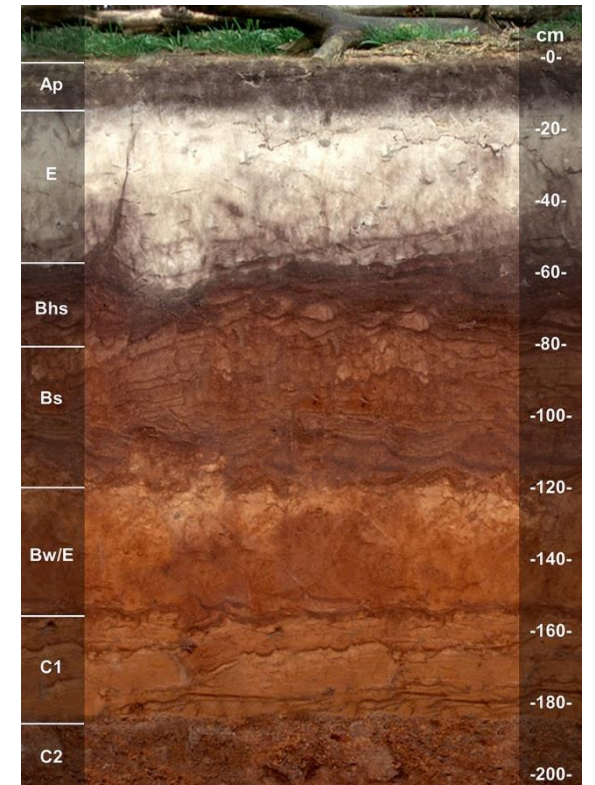


3rd GENERATION

Hānau mai kā lākou ‘o **Kahanui** he keiki
They give birth to the Kahanui soil series



Spodosol
Leached subsoil (Al, Fe, OM)



‘O **Ka‘alā** ka makua, ‘o **‘Elenahu** ka makua, ‘o **Nenelu** ka makua
 The parents Basalt, Peat, and Ditch of Soft Plumpness



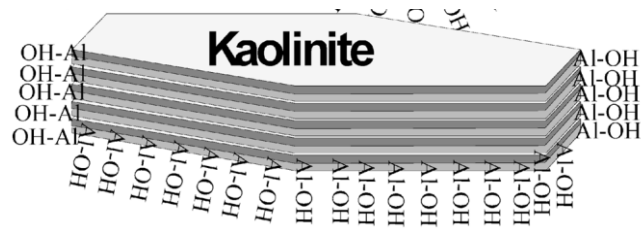
BASALT



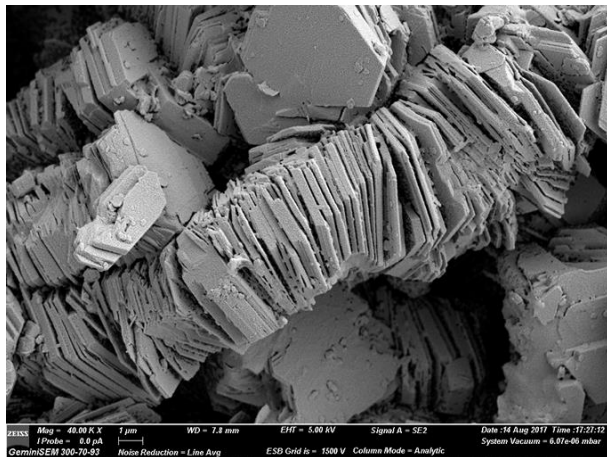
PEAT



MARSHY/BOGGY



Hānau mai kā lākou ‘o **Alaka‘i** he keiki
 They give birth to the Alaka‘i soil series



Histosol
 OM rich, saturated

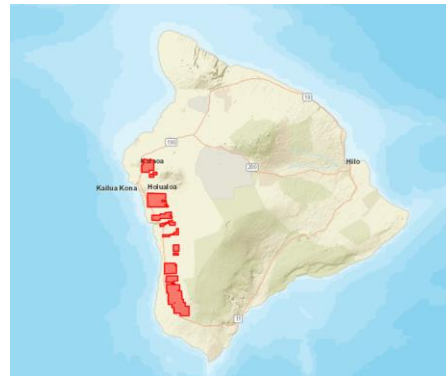


Alakai series, O‘ahu

‘O **Ka‘alā** ka makua, ‘o **Kānehoalani** ka makua
The parents Basalt and Sun



Hānau mai kā lāua ‘o **Kolo^H** he keiki
They give birth to the Kolo soil series



Entisol
Young, lava flow, least developed



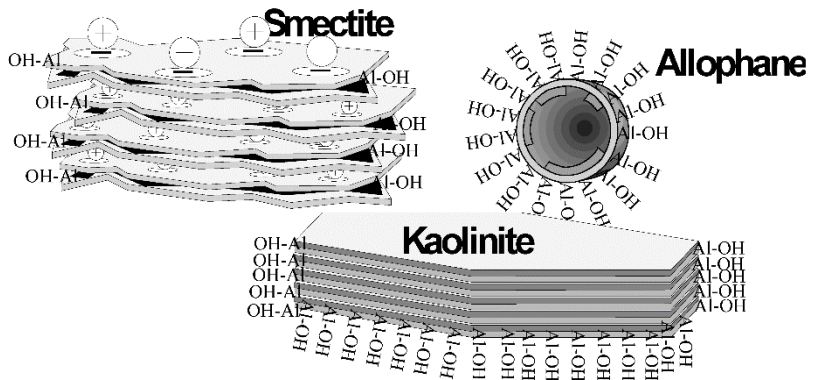
‘O **Ka‘alā** ka makua, ‘o **Kānekālahonua** ka makua, ‘o **Lononuihoikawai** ka makua

The parents Basalt, the sitting water of Lono, and Kāne the carver of the earth

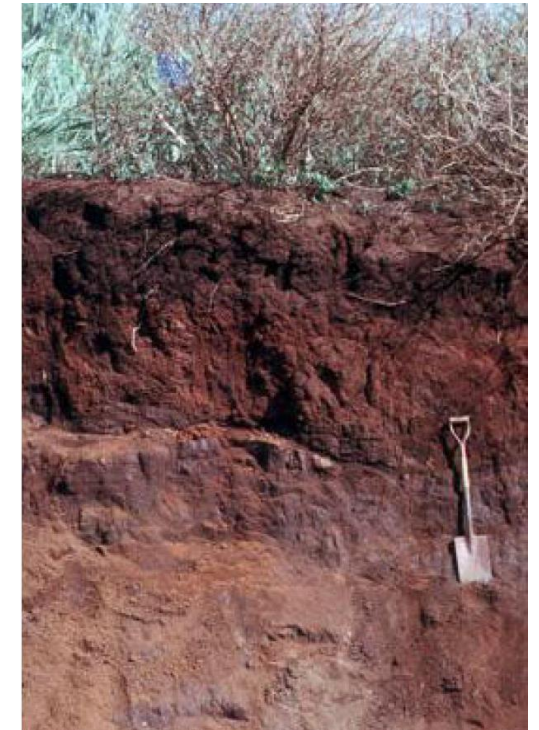


Hānau mai kā lākou ‘o **Hanalei^K** he keiki

They give birth to the Hanalei soil series



Inceptisol
Alluvial, juvenile, mixed mineralogy

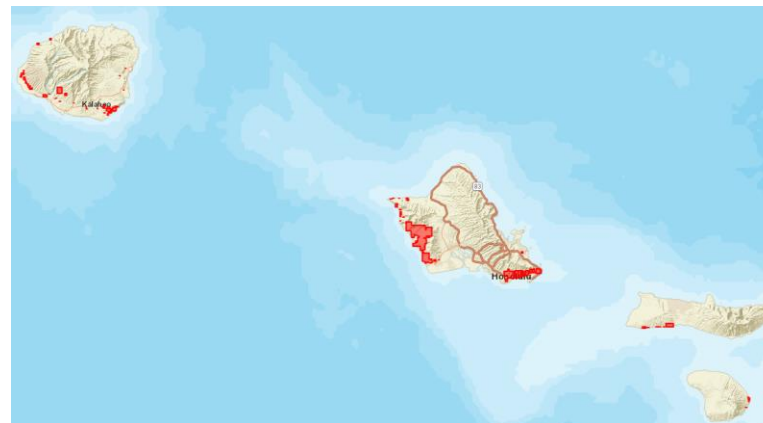
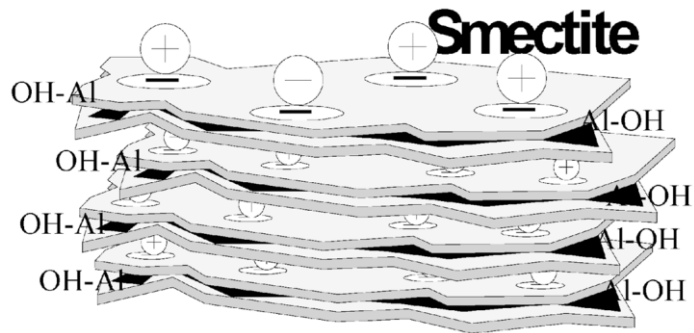


Kolekole series, O‘ahu

‘O **Ka‘alā** ka makua, ‘o ‘**Alaeahuli** ka makua
The parents Basalt and Shrink-swell Clay



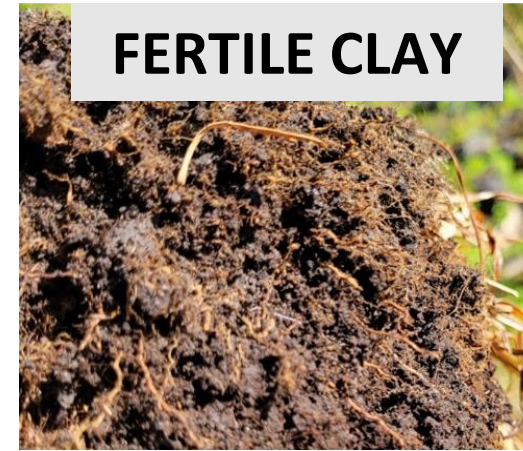
Hānau mai kā lāua ‘o **Lualualei** he keiki
They give birth to the Lualualei soil series



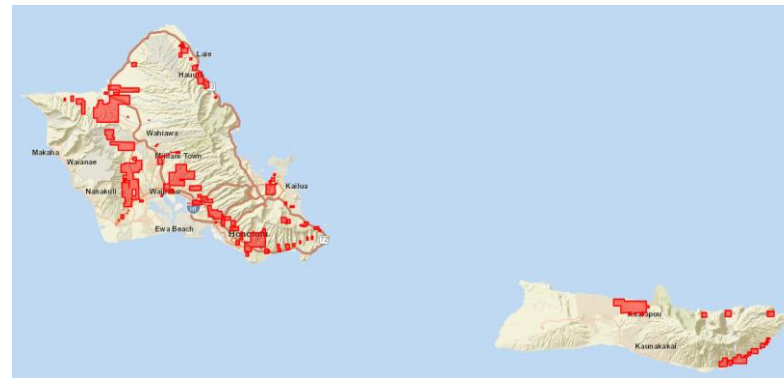
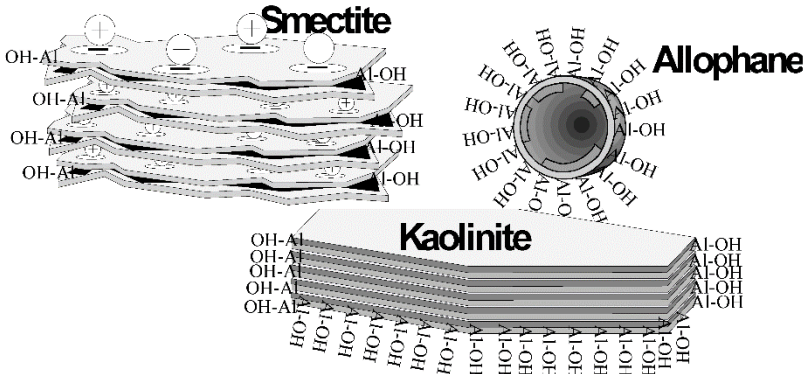
Vertisol
Smectitic, shrink-swell



'O Ka'ālā ka makua, 'o 'Alaeamomona ka makua The parents Basalt and Fertile Clay



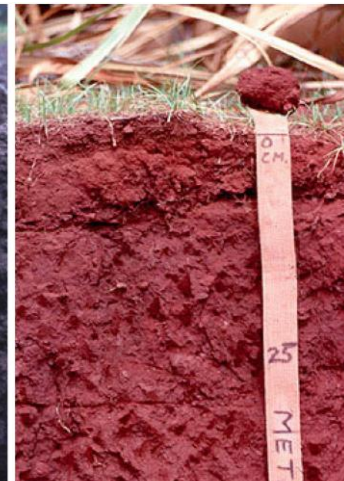
Hānau mai kā lāua 'o **Kawaihapai**^o he keiki They give birth to the Kawaihapai soil series



Mollisol
Fertile, grassland

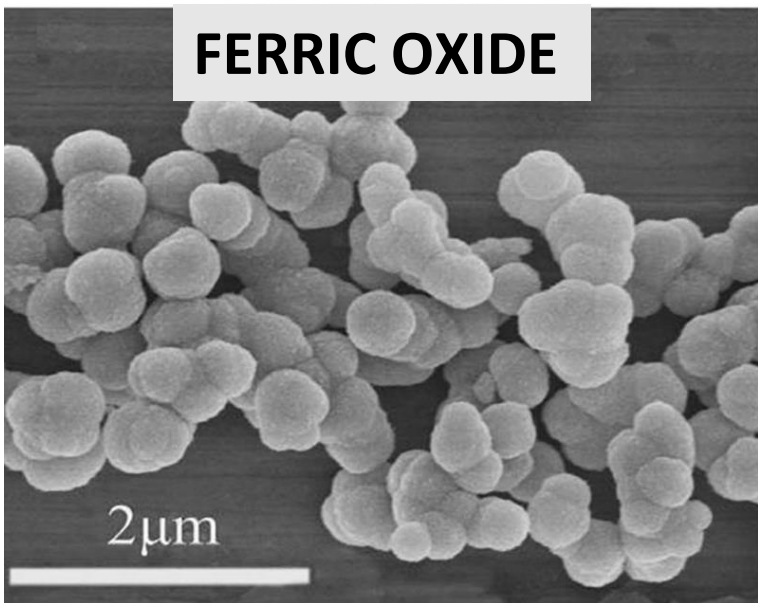
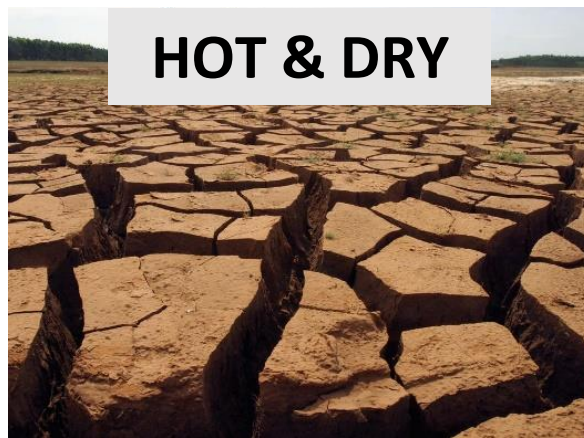


Kawaihapai
series,
O'ahu

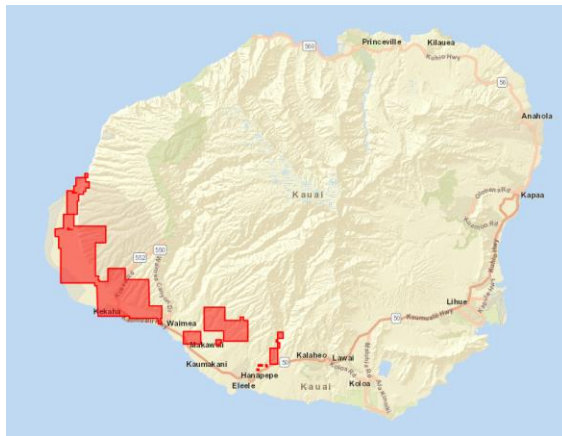


Makaweke
series,
Kaua'i

‘O **Ka‘alā** ka makua, ‘o **Pānoanoa** ka makua
The parents Basalt and Arid



Hānau mai kā lāua ‘o **Kekaha^K** he keiki
They give birth to the Kekaha soil series



Aridisol
Hot & dry



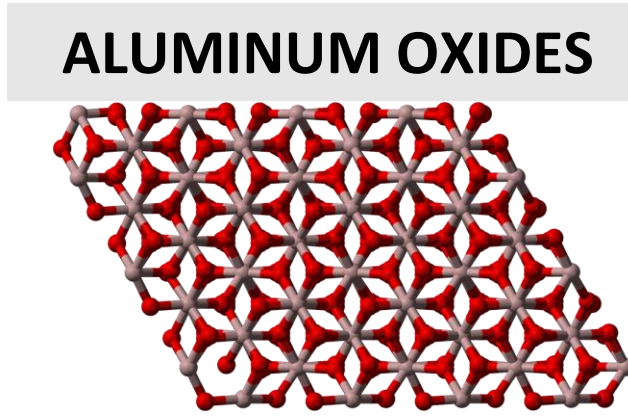
‘O **Ka‘alā** ka makua, ‘o ‘**Alaeamea** ka makua
The parents Basalt and Iron Oxide



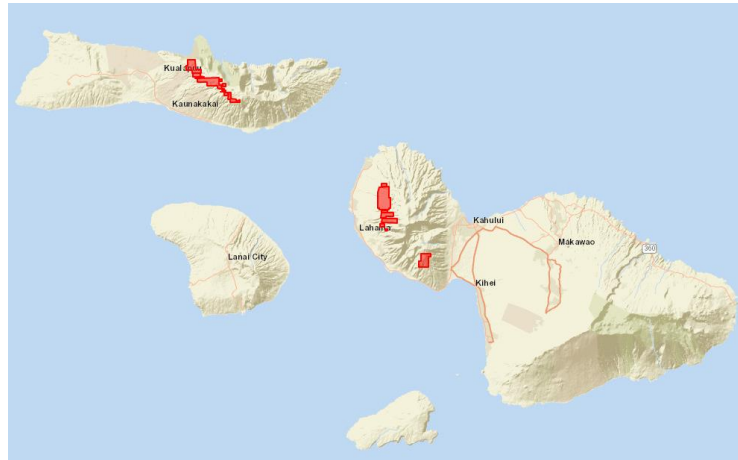
Hānau mai kā lāua ‘o **Moa‘ulanui**^{Kaho} he keiki
They give birth to the Moa‘ulanui soil series



‘O **Ka‘alā** ka makua, ‘o ‘**Alaeapa‘a** ka makua
The parents Basalt and Stable Clay



Hānau mai kā lāua ‘o ‘**Ōlelo^{Molo}** he keiki
They give birth to the ‘Ōlelo soil series



Ultisol
Well-developed, deep, stable, senile



‘O **Kalehu** ka makua, ‘o **Wākea** ka makua,
The parents Volcanic Ash and Sun

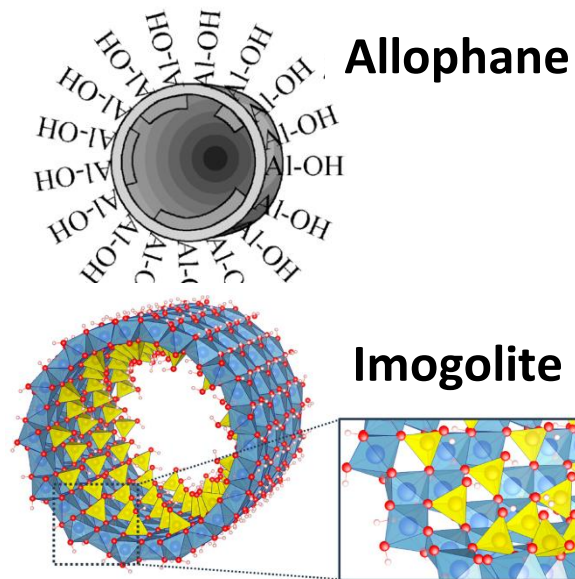
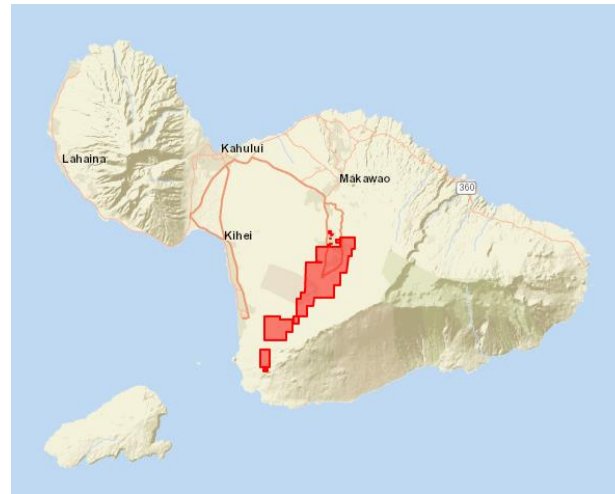


VOLCANIC ASH



SUN

Hānau mai kā lāua ‘o **Kula^M** he keiki
They give birth to the Kula soil series



Andisol
Allophane/Imogolite, fluffy, high OM



**Kula series,
Maui**

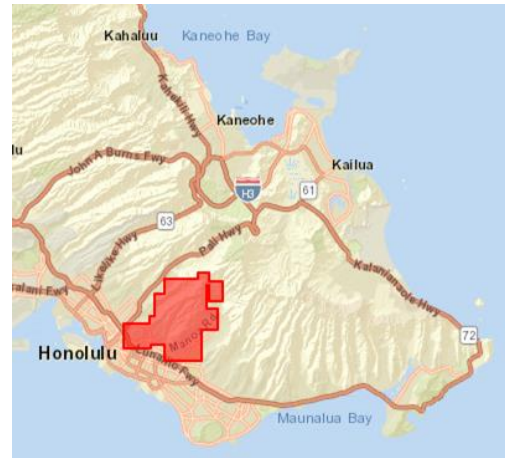
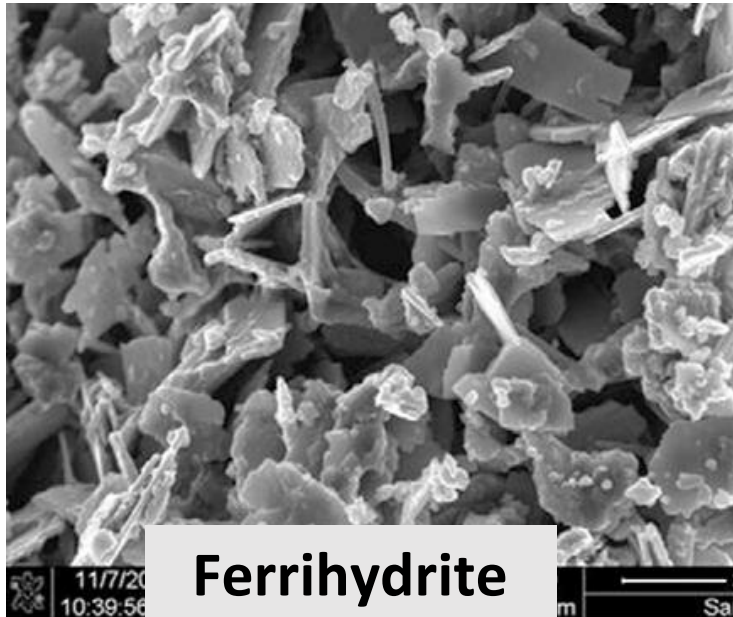


**Hilo series,
Hawai'i**

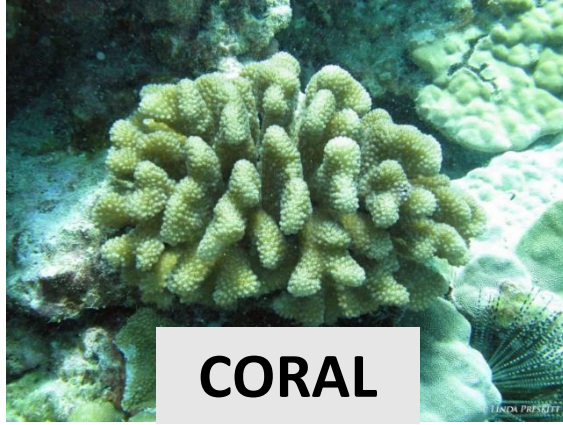
‘O **Kalehu** ka makua, ‘o **Tuahine** ka makua,
The parents Volcanic Ash and Tuahine (Mānoa rain)



Hānau mai kā lāua ‘o **Pu‘u ‘Ōhi‘a** he keiki
They give birth to the Pu‘u ‘Ōhi‘a soil series



‘O **Keko**‘a ka makua, ‘o **Kānehoalani** ka makua
The parents Coral and Sun



CORAL

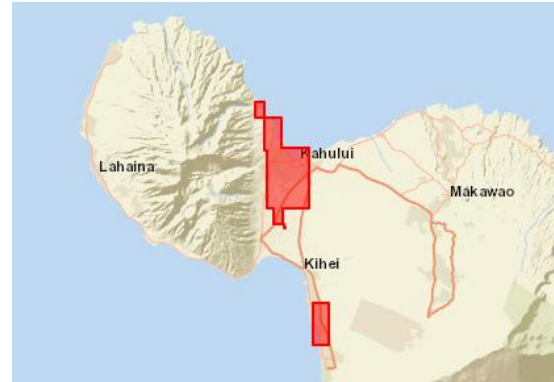


SUN

SAND

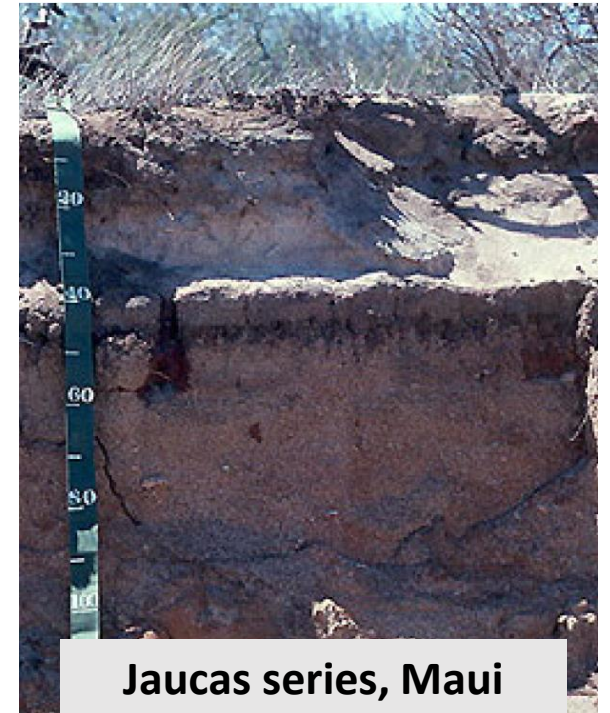


Hānau mai kā lāua ‘o **Pu‘uone^M** he keiki
They give birth to the Pu‘uone soil series



Entisol
Young, calcareous,
sandy

‘O **kēia** ka hānau ‘ana o ka papakū honua
This is the birthing of the earth’s foundation/surface
Ua ‘ikea!
And it is known!



Jaucas series, Maui